

## SwissTalents - The Knowledge Network

Statistical Analysis of its Members  
July 2002

### SwissTalents

«SwissTalents™ is the online network of highly skilled professionals with a university degree or equivalent, who live abroad and are Swiss or have strong ties to Switzerland»

SwissTalents' online directory of members - highly skilled specialists willing to share with others their professional experience and skills - can be publicly accessed through the Web (swisstalents.org) and queried with a search engine. Talented individuals – scientists, business persons, engineers, lawyers, historians, etc. – can therefore stay in touch with other highly skilled professionals worldwide and keep up-to-date on Swiss science, technology, higher education, and innovation. More information on the benefits for members is given in annex 1.

### GEOGRAPHICAL DISTRIBUTION

On July 16, 2002, SwissTalents had 2,342 members distributed among 56 countries, a growth of 1'094 members since the previous statistical analysis of March 27, 2000. The strong North American predominance is the result of a long-standing relationship between the Science Counselors and SwissTalents members living in the United States and Canada, but does not necessarily reflect the global distribution of potential members

Argentina (2)	Australia (148)	Belgium (11)
Bosnia (1)	Brazil (4)	Bulgaria (2)
Canada (107)	Chile (6)	China (8)
Colombia (3)	Costa Rica (1)	Czech Republic (1)
Denmark (6)	Egypt (1)	Finland (5)
France (74)	Germany (164)	Ghana (2)
Greece (1)	Hungary (3)	India (5)
Indonesia (1)	Iran (1)	Ireland (8)
Israel (7)	Italy (3)	Japan (26)
Kuwait (1)	Kyrgyztan (1)	Lebanon (1)
Malaysia (7)	Mexico (5)	Morocco (2)
Netherlands (17)	New Zealand (2)	Nicaragua (1)
Norway (4)	Omar (1)	Papua New Guinea (2)
Peru (5)	Poland (1)	Russia (2)
Slovenia (1)	South Africa (3)	Spain (11)
Sweden (14)	Taiwan (4)	Turkey (2)
United Arab Emirates (4)	United Kingdom (49)	USA (1,303)

Figure 1 : Global distribution of SwissTalents members

---

SwissTalents has been made possible in 2002 by the support of following sponsors :



Credit Suisse  
McKinsey  
Nestlé  
MediaMind

Within the United States, the distribution of SwissTalents members in the regions defined hereafter is as follows :

- USA DC      Washington, D.C. and the large region surrounding the capital  
(*Delaware, District of Columbia, Kentucky, Maryland, Virginia, West Virginia*)
- USA NE      New York, Boston and New England, among others  
(*Connecticut, Maine, Massachusetts, New Hampshire, New Jersey, New York, Pennsylvania, Rhode Island, Vermont*)
- USA SE      Research Triangle, Florida and Texas, among others  
(*Alabama, Arkansas, Colorado, Florida, Georgia, Kansas, Louisiana, Mississippi, New Mexico, North/South Carolina, Oklahoma, Tennessee, Texas*)
- USA Center      Chicago (Great Lakes), Minneapolis and St. Louis, among others  
(*Illinois, Indiana, Iowa, Michigan, Minnesota, Missouri, Nebraska, North Dakota, Ohio, South Dakota, Wisconsin, Wyoming*)
- USA NW      San Francisco, Silicon Valley, Seattle and Salt Lake City, among others  
(*Alaska, Northern California, Hawaii, Idaho, Montana, Nevada, Oregon, Utah, Washington*)
- USA SW      Los Angeles and San Diego, among others  
(*Arizona, Southern California*)

USA total	USA DC	USA NE	USA SE	USA Center	USA NW	USA SW
1,303	119	272	175	148	369	220

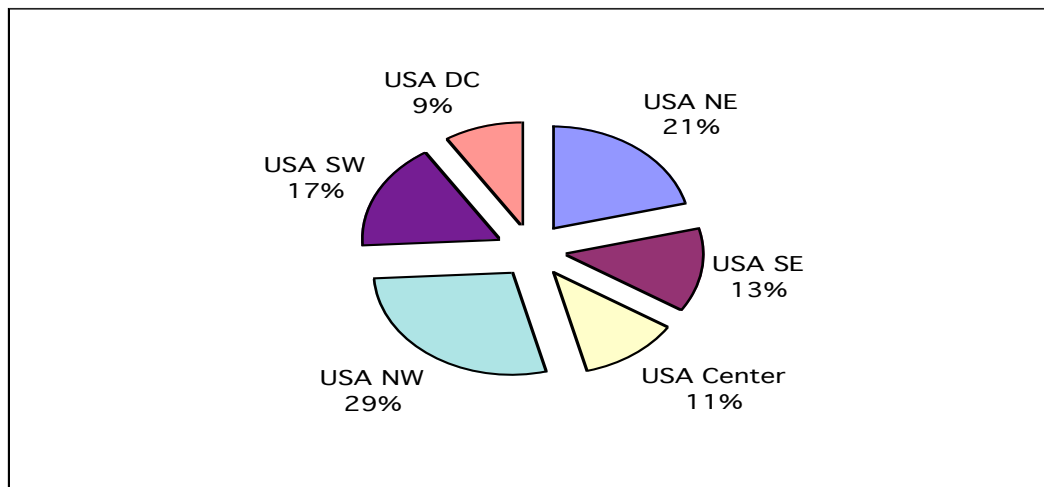


Figure 2 : *Distribution of SwissTalents members in different regions of the United States, in absolute terms (table) and percentages (graph). Following changes have occurred in the percentages since March 27, 2000: DC +1%, NE 0%, SE -2%, Center -2%, NW 0%, SW +3%*

## MEN AND WOMEN

The Swiss Federal Office of Statistics published following numbers : in 2001 in Switzerland, 21.2% of women versus 19.9% of men were entering universities and 11.3% of men versus 9% of women graduated ([http://www.statistique.admin.ch/stat\\_ch/ber15/fber15.htm](http://www.statistique.admin.ch/stat_ch/ber15/fber15.htm)). The gender distribution of SwissTalents members (who all have a university degree or equivalent) is as follows :

%	World	Germany	Canada	USA total	USA NE	USA SE	USA Center	USA NW	USA SW	USA DC
<b>Male</b>	84.2 (89.0)	82.1 (88.0)	87.4 (92.5)	83.2 (88.8)	88.2 (90.4)	90.9 (91.8)	90.5 (92.3)	84.9 (89.5)	83 (85.2)	69.8 (77.6)
<b>Female</b>	15.8 (11.0)	17.9 (12.0)	12.6 (7.5)	16.8 (11.2)	11.8 (9.6)	9.1 (8.2)	9.5 (7.7)	15.1 (10.5)	17 (14.8)	30.2 (22.4)

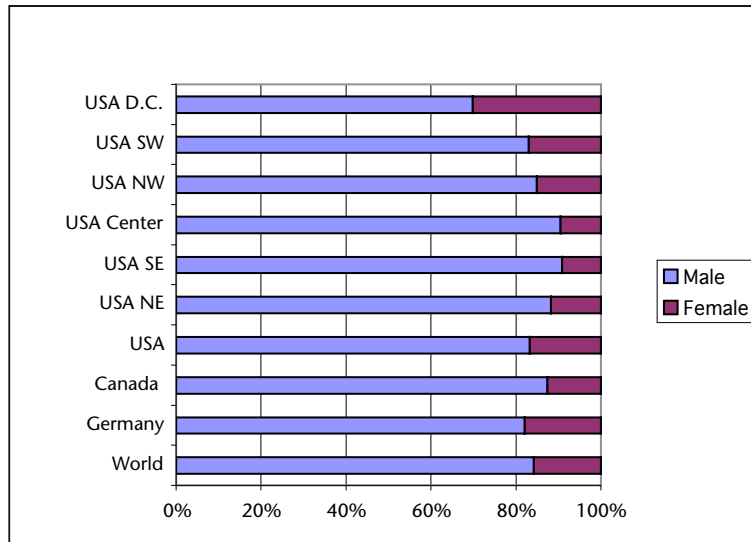


Figure 3 : Distribution of SwissTalents members between men and women (the numbers in parentheses in the table are the ones of the March 27, 2000 analysis)

## AGE PROFILE

Across various regions of the World and North America, the age profile of SwissTalents members is as follows :

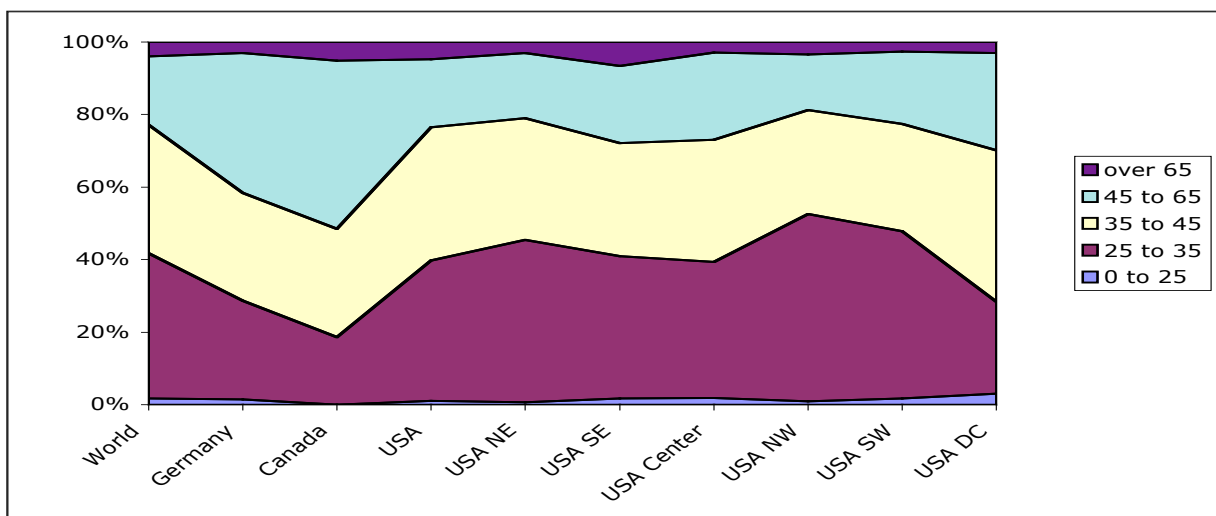


Figure 4 : Distribution of SwissTalents members by age categories

## PROFESSIONAL ACTIVITY

In their SwissTalents profile, members describe their occupation by a free-form text as well as a single numerical code according to the ISCO88 (*International Standard Classification of Occupations*, cf. Annex 3). The occupations of the members are classified below according to four general categories, then analyzed in greater detail by subcategories.

%	World	Germany	CAN	USA	USA NE	USA SE	USA Center	USA NW	USA SW	USA DC
Physics, maths, engineering	50.2	41.4	39.3	52.4	42.4	67.8	46.3	65.8	54.5	38.0
Life sciences, health	25.1	20.3	37.2	28.1	34.4	19.4	25.6	17.8	28.38	38.9
Teaching	5.8	16.0	8.2	4.4	5.1	9.6	9.4	2.7	3.1	2.4
Business, law and others	18.9	22.3	15.3	15.1	18.1	3.2	18.7	13.7	14.1	20.7

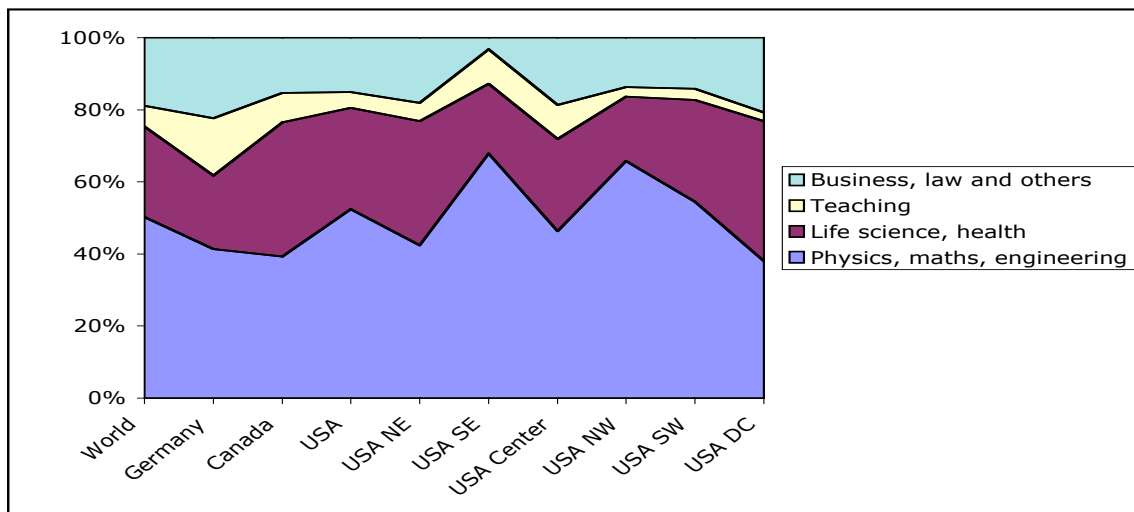


Figure 5 : Distribution of SwissTalents members by occupation

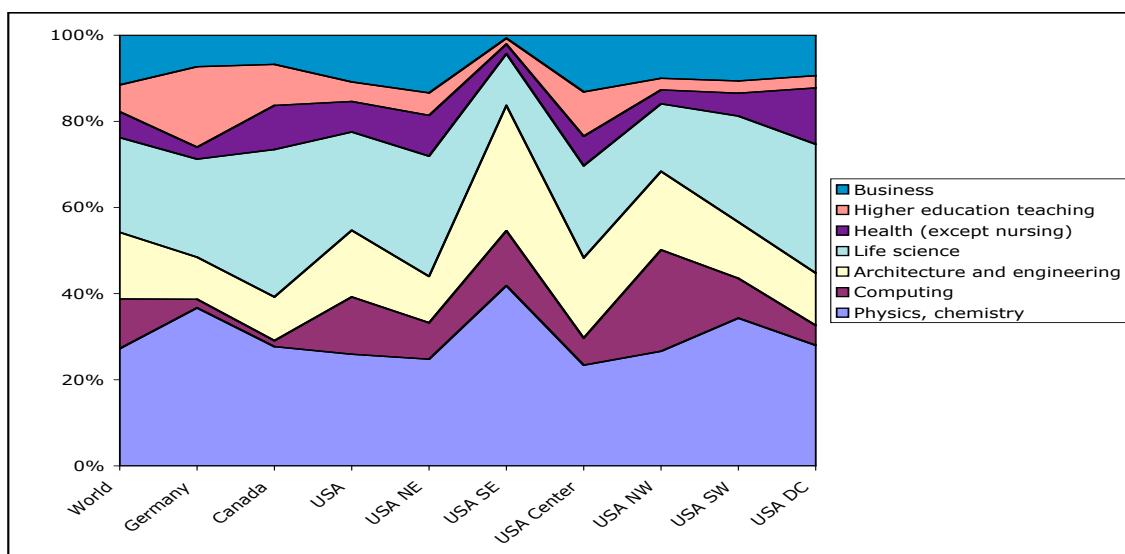


Figure 6 : More detailed analysis of occupations according to various subcategories

## CONCLUSIONS

There were 2'342 SwissTalents members on July 16, 2002, an increase of 88% from March 27, 2000. The members are distributed among 56 countries, up from 41 countries in 2000. Members from US and Canada make up for 60% of total membership and as explained earlier this is the result of long-standing relationship between the Science Counselors and Swiss talents members living in these two countries. Besides members from US and Canada, there is a predominance of members from Germany, Australia, France and UK (19%).

On the average, only about 16% of the members are women. This percentage is slightly higher in Germany (18%). In the US about 17% of members are women, a percentage which increases significantly in the greater Washington, D.C. area and the Southwest (Los Angeles and San Diego) - possibly because of the importance of its biotechnology center.

The average of members aged between 45 and 65 is the highest in Canada. It is the lowest in the Northwest, where the Silicon Valley and the Seattle region, in particular, attract a great number of young information technology and biotechnology specialists. The young age of these members is in alignment with the age of the local population, in a region of pioneers without ties who often devote much if not all of their time to their jobs.

There is predominance of members from the disciplines of physical sciences, mathematics and engineering in almost all regions of US followed by life sciences and health. The other centers which stand out are :

- Washington, D.C. for lawyers, business and the life sciences
- The Northwest for information technologies, engineering and basic sciences
- The Southwest and the Northeast for life sciences

*For further information :*

Swiss Science & Technology Office  
456 Montgomery, Suite 1500  
San Francisco, CA 94104 (USA)  
T (415) 788-2272  
F (415) 788-1402  
info@sciencelink.org

## ANNEX 1 : Details on SwissTalents

### What is SwissTalents?

SwissTalents is the online community of people of all nationalities who :

- Have international experience and/or currently work outside Switzerland
- Are interested in Swiss science, technology and innovation
- Have a university degree or an equivalent range of professional skills and talents

The network was created and is managed by the Swiss Science and Technology Offices, an affiliate of the Swiss Science Agency.

### The Swiss Science and Technology Offices

The Swiss Science and Technology Offices analyze trends in science, technology, higher education, and innovation. They publish the information in newsletters and reports and disseminate it at conferences and on websites. They initiate networks and cooperation among institutions and individuals around the world.

### SwissTalents Network Benefits

Members of SwissTalents enjoy following benefits :

- A free subscription to *Vision: Science and Innovation Made in Switzerland*, a quarterly publication
- Direct access to periodic online newsletters on breakthroughs in science, technology and innovation in separate Swiss, North American, European, and Asian editions
- Invitations to a wide range of events: conferences, meetings and networking opportunities (depending on where you live)
- The opportunity to participate in specific initiatives and surveys on issues crucial to Swiss innovation potential
- Online access to various links and job search leads
- Special time-limited offers from selected SwissTalents partners (when available)

More exciting services and opportunities will be added on a regular basis as the SwissTalents network grows.

### Becoming a Member of SwissTalents

The SwissTalents website at [www.swisstalents.org](http://www.swisstalents.org) offers plenty of additional information. Registration is very simple and takes only a few minutes.

### Support

SwissTalents has been created and is managed by the Swiss Science Counselor in San Francisco, within the framework of the global network of Swiss Science Counselors. SwissTalents was launched with the support of Nestlé and the Council of the Swiss Federal Institutes of Technology. The development and operation of SwissTalents in 2002 were made possible by partnerships with gold sponsor Lombard Odier, as well as silver sponsors Crédit Suisse, McKinsey, MediaMind and Nestlé.

## ANNEX 2 : Methodology of the analysis

In order to allow each member to best describe his or her occupational activity and skills, SwissTalents gives great importance to the free-form fields in the individual profiles. This limits the amount of data that can be compared across profiles.

Registration with SwissTalents is done by interested persons on a voluntary basis. SwissTalents is therefore statistically not representative of all talented individuals who could potentially be members.

The analysis was performed by Mita Das, Marie-Noëlle Hicks and Sabine Schaer.

## ANNEX 3 : ISCO88 codes

*International Standard Classification of Occupations*

### **21 Physical, mathematical and engineering science professionals**

- 211 Physicists, chemists and related professionals
  - 2111 *Physicists and astronomers*
  - 2112 *Meteorologists*
  - 2113 *Chemists*
  - 2114 *Geologists and geophysicists*
  - 2119 *Environmental professionals*
- 212 Mathematicians, statisticians and related professionals
  - 2121 *Mathematicians and related professionals*
  - 2122 *Statisticians*
- 213 Computing professionals
  - 2131 *Computer systems designers, analysts and programmers*
  - 2139 *Other computing professionals*
- 214 Architects, engineers and related professionals
  - 2141 *Architects, town and traffic planners*
  - 2142 *Civil engineers*
  - 2143 *Electrical engineers*
  - 2144 *Electronics and telecommunications engineers*
  - 2145 *Mechanical engineers*
  - 2146 *Chemical engineers*
  - 2147 *Mining engineers, metallurgists, material scientists and related professionals*
  - 2149 *Other architects, engineers and related professionals*

### **22 Life science and health professionals**

- 221 Life science professionals
  - 2211 *Biologists, biotechnology professionals, botanists, zoologists and related professionals,*
  - 2212 *Pharmacologists, pathologists and related professionals*
  - 2213 *Agronomists, food engineers and related professionals*
  - 2219 *Other life science professionals*
- 222 Health professionals (except nursing)
  - 2221 *Medical doctors*
  - 2222 *Dentists*
  - 2223 *Veterinarians*
  - 2224 *Pharmacists*
  - 2229 *Other health professionals (except nursing)*
- 223 Nursing professionals

### **23 Teaching professionals**

- 231 College, university and higher education teaching professionals
- 239 Other teaching professionals

### **24 Other professionals**

- 241 Business professionals
- 242 Legal professionals
- 243 Information management professionals
- 244 Social science and related professionals
  - 2441 *Economists*
  - 2442 *Sociologists, anthropologists and related professionals*
  - 2443 *Philosophers, historians and political scientists*
  - 2444 *Linguists, philologists, literature professionals, translators and interpreters*
  - 2445 *Psychologists*
  - 2449 *Other social science and related professionals*
- 245 Writers and artists
- 246 Religious professionals
- 247 Public service administrative professionals